

# Professional Emergency Power Supply Solution



**Professional Emergency Backup Storage Battery**



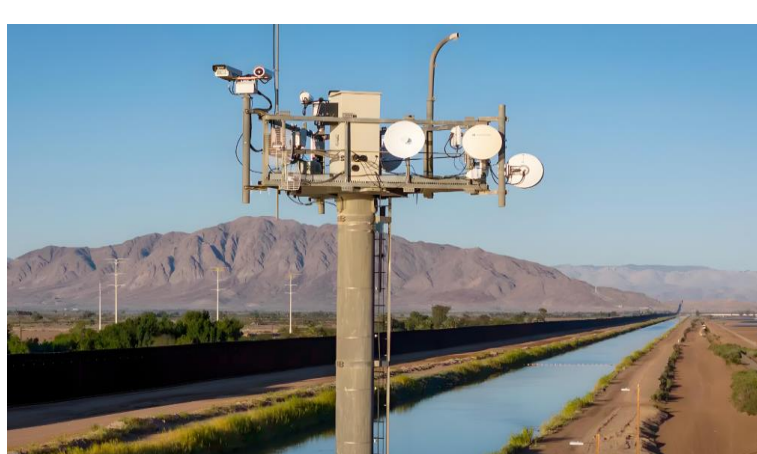
## [Product Description]

Professional Emergency Backup Storage Battery, Built-in large capacity lithium iron phosphate battery, stable voltage output, support CAN\RS485 communication mode, external LCD screen, real-time display of electricity, support for docking software platform, real-time monitoring of electricity and equipment status.

## Scope of Application



**Cruise ship emergency power**



**Communication emergency power**



**Farm emergency power**



**Villa area emergency power**

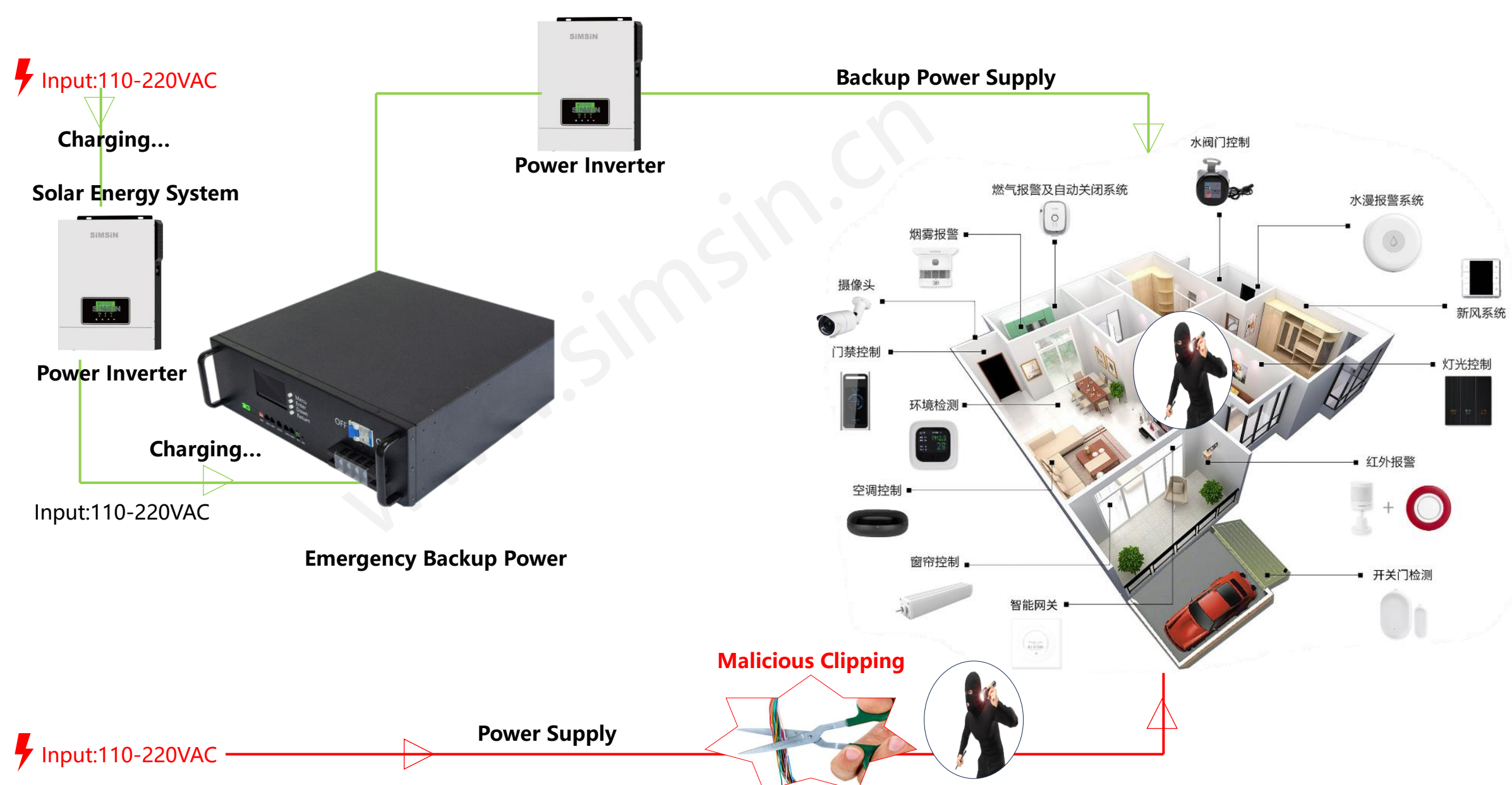


**Construction emergency power**



**Server emergency power**

## Professional Emergency Power Supply System



## Product introduction

Model No	SS-PEPB-5KW3U50KG026CU	SS-PEPB-10KW6U100KG052CU	SS-PEPB-15KW9U150KG078CU	SS-PEPB-20KW12U200KG104CU	SS-PEPB-25KW15U250KG130CU
Product Type	5KW Emergency Backup Storage Battery	10KW Emergency Backup Storage Battery	15KW emergency storage battery	20KW emergency storage battery	25KW emergency storage battery
Product Description	Built-in 100AH lithium iron phosphate battery, 50V voltage output, maximum capacity 5KW, support RS485 communication mode, external LCD screen, real-time display of electricity, support for docking software platform, real-time monitoring of electricity and equipment status.	Built-in 200AH lithium iron phosphate battery, 50V voltage output, maximum capacity 10KW, support RS485 communication mode, external LCD screen, real-time display of electricity, support docking software platform, real-time monitoring of electricity and equipment status.	Built-in 300AH lithium iron phosphate battery, 50V voltage output, maximum capacity 15KW, support RS485 communication mode, external LCD screen, real-time display of electricity, support docking software platform, real-time monitoring of electricity and equipment status.	Built-in 400AH lithium iron phosphate battery, 50V voltage output, maximum capacity 20KW, support RS485 communication mode, external LCD screen, real-time display of electricity, support docking software platform, real-time monitoring of electricity and equipment status.	Built-in 500AH lithium iron phosphate battery, 50V voltage output, maximum capacity 25KW, support RS485 communication mode, external LCD screen, real-time display of electricity, support for docking software platform, real-time monitoring of electricity and equipment status.
Scope of application	Used in villa, bank, hospital, warehouse, workshop, prison, border defense and other emergency power supply scenarios.	Used for villa, bank, hospital, warehouse, workshop, prison, border and other emergency power supply.	Used for villa, bank, hospital, warehouse, workshop, prison, border and other emergency power supply.	Used for villa, bank, hospital, warehouse, workshop, prison, border and other emergency power supply.	Used in villa, bank, hospital, warehouse, workshop, prison, border defense and other emergency power supply scenarios.
Key parameter	Normal battery voltage (Vdc) : 50	Normal battery voltage (Vdc) : 50	Normal battery voltage (Vdc) : 50	Normal battery voltage (Vdc) : 50	Normal battery voltage (Vdc) : 50
	Normal capacity (Ah) :100	Normal capacity (Ah) :200	Normal capacity (Ah) :300	Normal capacity (Ah) :400	Normal capacity (Ah) :500
	Normal capacity (WH) :5000	Normal capacity (WH) :10000	Normal capacity (WH) :15000	Normal capacity (WH) :20000	Normal capacity (WH) :25000
	Fast charging voltage (Vdc) :56	Fast charging voltage (Vdc) :56	Fast charging voltage (Vdc) :56	Fast charging voltage (Vdc) :56	Fast charging voltage (Vdc) :56
	Maximum continuous charging current (A) :100	Maximum continuous charging current (A) :100	Maximum continuous charging current (A) :100	Maximum continuous charging current (A) :100	Maximum continuous charging current (A) :100
	Terminal: M6	Terminal: M6	Terminal: M6	Terminal: M6	Terminal: M6
	Built-in storage temperature: -20°C~+30°C	Built-in storage temperature: -20°C~+30°C	Built-in storage temperature: -20°C~+30°C	Built-in storage temperature: -20°C~+30°C	Built-in storage temperature: -20°C~+30°C
	Maximum storage duration: 6 months /25 ° C	Maximum storage duration: 6 months /25 ° C	Maximum storage duration: 6 months /25 ° C	Maximum storage duration: 6 months /25 ° C	Maximum storage duration: 6 months /25 ° C
	Safety standards: UN38.3,MSDS. CE,CB,IEC	Safety standards: UN38.3,MSDS. CE,CB,IEC	Safety standards: UN38.3,MSDS. CE,CB,IEC	Safety standards: UN38.3,MSDS. CE,CB,IEC	Safety standards: UN38.3,MSDS. CE,CB,IEC
	Protection design: overcharge protection, overdischarge protection, current protection, short circuit protection, voltage protection	Protection design: overcharge protection, overdischarge protection, current protection, short circuit protection, voltage protection	Protection design: overcharge protection, overdischarge protection, current protection, short circuit protection, voltage protection	Protection design: overcharge protection, overdischarge protection, current protection, short circuit protection, voltage protection	Protection design: overcharge protection, overdischarge protection, current protection, short circuit protection, voltage protection
	Communication port: CAN/RS485	Communication port: CAN/RS485	Communication port: CAN/RS485	Communication port: CAN/RS485	Communication port: CAN/RS485
	Compatible with major brands of solar inverters	Compatible with major brands of solar inverters	Compatible with major brands of solar inverters	Compatible with major brands of solar inverters	Compatible with major brands of solar inverters
	Operating temperature: -10°C~+50°C (discharge), 0°C~+50°C (charging)	Operating temperature: -10°C~+50°C (discharge), 0°C~+50°C (charging)	Operating temperature: -10°C~+50°C (discharge), 0°C~+50°C (charging)	Operating temperature: -10°C~+50°C (discharge), 0°C~+50°C (charging)	Operating temperature: -10°C~+50°C (discharge), 0°C~+50°C (charging)
Working humidity: 0~95% (no condensation)	Working humidity: 0~95% (no condensation)	Working humidity: 0~95% (no condensation)	Working humidity: 0~95% (no condensation)	Working humidity: 0~95% (no condensation)	
Product size (mm) : 442*420*139mm	Product size (mm) : 884*840*278mm	Product size (mm) : 1326*1260*417mm	Product size (mm) : 1768*1680*556mm	Product size (mm) : 2210*2100*695mm	
Weight (Kg) : 50	Weight (Kg) : 100	Weight (Kg) : 150	Weight (Kg) : 200	Weight (Kg) : 250	
Brand Name: SiMSiN	Brand Name: SiMSiN	Brand Name: SiMSiN	Brand Name: SiMSiN	Brand Name: SiMSiN	

### More information.....

**SIMSIN ELECTRONIC TECHNOLOGY CO.,LTD**

Address: Building A, World Trade Plaza, Futian District, Shenzhen, China

★ Contact : Mr Allen.kok

★ Email: [simsin@simsin.cn](mailto:simsin@simsin.cn)

★ <https://www.simsin.cn>

